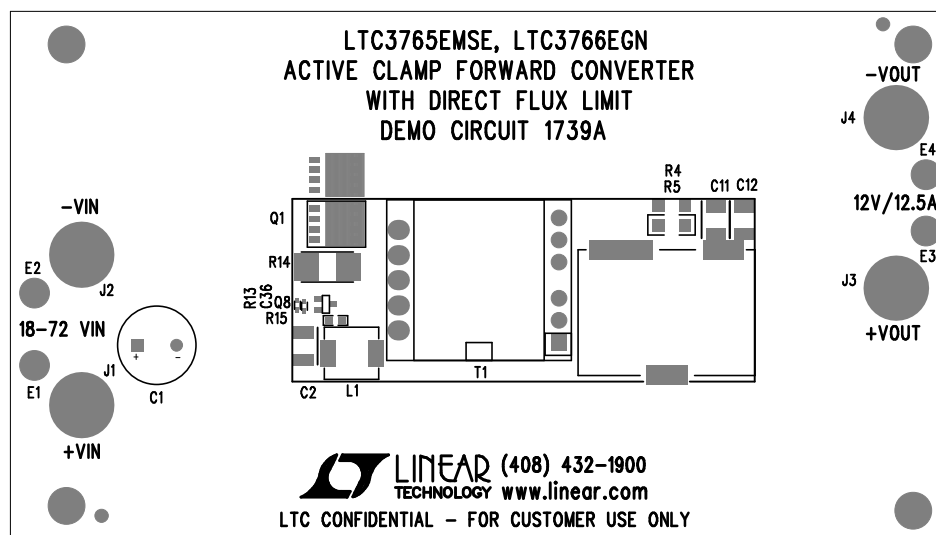


REVISION HISTORY				
ECO	REV	DESCRIPTION	APP. ENG.	DATE
-	2	PRODUCTION	DAVID B.	08-30-11

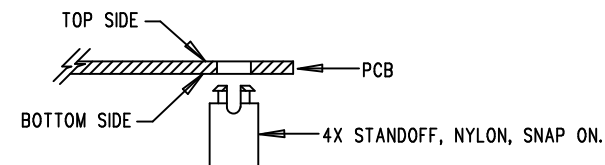



TOP SILKSCREEN

LINEAR TECHNOLOGY DATE: 08-30-11
 DC1739A-1-LTC3765EMSE, LTC3766EGN
 ACTIVE CLAMP FORWARD CONVERTER
 WITH DIRECT FLUX LIMIT

NOTES: UNLESS OTHERWISE SPECIFIED

1. WORKMANSHIP SHALL BE IN ACCORDANCE WITH IPC-A-610.
2. ASSEMBLY PROCESS SHALL INCLUDE: REFLOW SOLDER TOP SIDE SMD. MAXIMUM SOLDER TEMPERATURE IS 240 DEGREES CELSIUS.
3. PARTS TO OMIT WILL BE SPECIFIED ON THE BILL OF MATERIALS. LOCATIONS OF OMITTED PARTS SHALL BE FREE OF SOLDER. MASK THE SOLDER STENCIL WHERE SMT PARTS ARE OMITTED.
4. INSTALL SHUNTS AS SHOWN ON ASSY DRAWING.
5. DEPANELIZE BOARDS AFTER ASSEMBLY AND ROUTE-OUT THE BREAKOUT TABS ON FOUR SIDES OF THE BOARD EDGE.
6. DO NOT APPLY ANY KIND OF ASSEMBLY STAMP OR QA STAMP TO ANY BOARD.
7. INSTALL 4 STANDOFFS AT 4 LOCATIONS AS SHOWN BELOW:



APPROVALS		 <div>1630 MCCARTHY BLVD MILPITAS, CA 95035 PH: (408)432-1900 www.linear.com LTC CONFIDENTIAL- FOR CUSTOMER USE ONLY</div>		
PCB DES.	AK			
APP ENG.	DAVID B.			
		TITLE: TOP ASSEMBLY DRAWING ACTIVE CLAMP FORWARD CONVERTER WITH DIRECT FLUX LIMIT		
		SIZE N/A	IC NO. LTC3765EMSE, LTC3766EGN DEMO CIRCUIT 1739A	REV. 2
SCALE = NONE		FILENAME: DC1739A-1.PCB		SHT 1 OF 1